

*Burnett County*

# 4-H Bugle

*September 2007*

## A Note From the Agent

It's back to school time again, and one of the problems that kids and their families have to deal with in school is bullying. How do you know what constitutes bullying? The key markers to watch out for include an imbalance of power, intent to harm, repetition, and terror. A person is being victimized when he or she is exposed repeatedly to negative actions by one or more persons. Bullying is intentional. It is meant to cause harm and/or fear. It can be physical or verbal.

## In this issue...

4-H Calendar.....	2
Achievement Night.....	2
Re-Enrollment Season.....	2
4-H Scholarships.....	3
Community Service Grant.....	3
National 4-H Week.....	3
Music Contest.....	4
Honey Bee Poster Contest.....	5
Holiday Drawing Contest.....	5
Camp Cook's Corner.....	5
Leaders Association Meeting Minutes.....	6
Orange 4-H Club Notes.....	7

Warning signs of being bullied include:

- lack of interest in friends
- refusal to go to school
- withdrawal from school activities
- drop in grades
- hiding clothes or other personal items
- making a beeline to the bathroom when arriving home



If you notice a behavioral change in your child, find out what is going on in their social world. Use conversation starters such as:

- Who did you play with today?
- Who do you like in your class?
- What do you like about him or her?
- How did things go today with other kids?

Take all answers seriously. If your child says, "no one wants to play with me," this information is given to you because they trust you. Don't try to persuade them that this just can't be the case.

Having at least one good friend and being a friend to others are antidotes to bullying. Being a member of 4-H can help by opening up new social paths. Talk with school teachers, counselors and administrators if you are concerned about your child's relationships with his or her peers. Committed adults can help make a difference. No one deserves to be bullied.

*Information adapted from UWEX Eau Claire County, Family Living Connection, April 2006*

*-Mary*

*4-H is a community of young people across America who are learning leadership, citizenship and life skills.*

# 4-H Calendar

Month	Day	Event
September	10	Jr. Leaders Meeting – 7 pm
	11	Leaders Meeting – 7:30 pm <i>Hosts: Coomer Badgers</i>
October	1	Jr. Leaders Meeting – 7 pm
	7-13	National 4-H Week/Window Display
	9	Leaders Meeting – 7 pm <i>Hosts: Two Rivers</i>
	20	Burnett County 4-H Achievement Night
November	5	Jr. Leaders Meeting – 7 pm
	9	Music Contest
	13	Leaders Banquet/Annual Meeting
	16	Enrollments due to UWEX office
	23-27	National 4-H Congress
December	3	Jr. Leaders Meeting – 7 pm
		No Leaders Meeting – Happy Holidays

## Achievement Night

Bring your parents! Bring your grandparents! Bring your friends! Come one and all to the Burnett County 4-H Achievement Night, when we honor the 4-H members and leaders who make our program great! Achievement Night will be held Saturday, October 20, 7 p.m. at the Siren H.S. Auditorium. See you there!

## Re-Enrollment Season!

The leaves are changing colors...do you know what that means? It's time to renew your 4-H membership! Club leaders will receive re-enrollment forms for distribution to current club members and adult leaders. New enrollment forms are available from the UWEX office or online at <http://burnett.uwex.edu/4H>.



---

# 4-H Scholarship

The Burnett County 4-H Leaders Association is once again offering scholarships. Members who have completed at least one year of a 4-year post-secondary program or one semester of a 2-year program are eligible to apply. Application forms can be found on the Burnett County 4-H website at <http://burnett.uwex.edu/4H>. The application form is due by October 1, 2007.



---

# Community Service Grant

Sponsored by the Wisconsin 4-H Foundation and We Energies

Any 4-H club or group of 4-H clubs can apply for a grant of \$50-\$500 for a community service project. The project should be determined and led by youth, have a lasting and positive impact on the community, and involve organizations and individuals outside of 4-H as partners.

Applications are due to the UWEX office for Mary's signature by January 25 and to the 4-H Foundation by January 31. Grantees will be notified in March. See Mary for application form or <http://www.uwex.edu/ces/4h/foundation/grantscomm.cfm>.

---

# National 4-H Week Window Display Contest

October 7-13, 2007

Criteria for Window Display Contest:

- Must positively promote 4-H – be creative! Suggested theme: Capture the 4-H Spirit!
- Must be visible 24/7 (in a window if the business isn't open 24/7)
- Must contain contact information, to include the UWEX phone number
- Must have club name visible
- Must be up NO LATER than noon on Saturday, October 7 and remain up through Saturday, October 13
- The 4-H Emblem should appear whole and not covered by other objects. The tail must point to the right.

REGISTER the location of your window display by October 3 by calling Mary at 715/349-2151 or email [mary.pardee@ces.uwex.edu](mailto:mary.pardee@ces.uwex.edu).

# 2007 4-H Music Contest

The 2007 4-H Music Contest will be held Friday, November 9 at the Siren High School beginning at 7:00 p.m. **Registrations are due by Friday, November 2. No late entries will be allowed!**

- Each 4-H member may perform in two events in the contest in addition to a large ensemble event. All clubs are encouraged to bring a large ensemble, as it builds club cohesiveness.
- Solos and small ensembles are limited to three minutes. Advanced piano performers are allotted five minutes. Points will be deducted from the final total if contestant goes over the allotted time limit. Each entry will consist of one musical selection.
- Each instrumental and piano performer must provide the judge a copy of the music they are performing.
- Voice over tapes or CDs are allowed but strongly discouraged. Please try to use an accompanist or background music tape or CD. If the singer must use a voice over recording, the singer will need to use a microphone to have his/her voice heard over that of the recorded performer.
- The judge will only review the music performed by 4-H member. Please indicate when you register if you have any technical needs. (i.e. to play a cassette or CD, electricity, etc.)

## Categories

Category I - Solo

Category II - Small Ensembles

Category III - Group of 6 or more (In order to support families of younger members, this category will perform first, followed by Cloverbuds, etc. This will allow them to leave earlier if necessary.)

## Divisions

### A. INSTRUMENTAL PERFORMANCE

Judged on tone, articulation, rhythm, accuracy, musical value of the piece, and style/musicality.

### B. PIANO PERFORMANCE

Judged on rhythm, accuracy, phrasing, degree of difficulty and style /musicality.

For pianists who are 6th grade and older, there are three subdivisions; Beginner, Intermediate and Advanced.

An Advanced performer should be playing at level six or above in piano literature. Ask your piano teacher if you aren't certain of your level.

### C. VOCAL PERFORMANCE

Judged on tone, intonation, diction, expression, style, musicality and appropriateness to the performers and 4-H.

### D. VOCAL PLUS PERFORMANCE

Judging includes movement, choreography, costumes, props, originality and creativity in addition to areas judged in vocal performance.

## Age Classes

Cloverbud K-2

Grades 3-5

Grades 6-8

Grades 9-12

*In all divisions, appearance and stage presence will count as part of your score. Remember to dress so that you look your best!*

## Awards

Category I - All Divisions

1st \$4

2nd \$3

3rd \$2

4th \$1

Category II and III - All Divisions

1st \$10

2nd \$8

3rd \$6

4th \$4

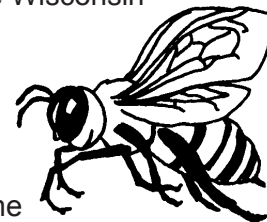


To register, please call the UWEX office at 715/349-2151 by Friday, November 2. You will need name, club, grade, category and division, selection title and any technical requirements.

**SEE YOU THERE!**

# Chance to Bee Creative...

4-H members are invited to enter the 2007 Honey Bee Poster Contest, sponsored by the Wisconsin Honey Producers Association. This year's theme is Pollination. Prepare an 11x14 inch poster incorporating the theme and send it by October 15 to: Sharon Pufahl, W6432 Co. Hwy. O, Mauston WI 53948.



There are four divisions: 2nd grade and under, 3-5 grade, 6-8 grade, and 9-12. Prizes in each division are: first place \$25, second place \$15, and third place \$10. Posters become the property of WHPA. Please add your name, address, age, school, grade on the back of the poster. 4-H members do not have to be enrolled in a bee keeping project in order to participate.

## Holiday Drawing Contest

The Wisconsin 4-H Foundation is encouraging all interested 4-H youth to submit a holiday sketch in pencil or black ink. If selected, your sketch will be made into a holiday card to be sent to the Wisconsin 4-H Foundation's major donors in December as a thank you for their support of 4-H. Your name, age, county, and club will appear on the card. Following is a list of general rules:

- The artwork must be original.
- The artwork needs to be reproducible in black and white (no color drawings please!).
- If possible, make your sketch a half page or smaller in size, and remember that it will need to fit into a business envelope for mailing to donors.
- Include your name, address, county, 4-H club, age, telephone number, and e-mail address (if available) with your sketch.
- Your drawing MUST be received by December 1, 2007.

Mail your drawing to Donna Faulkner, Wisconsin 4-H Foundation, 428 Lowell Hall, 610 Langdon Street, Madison, WI 53703.

## Camp Cook's Corner

*Great food was featured at Pioneer Camp 1865 (a.k.a. Summer Camp 2007). Courtesy of camp cook, Becky Strabel, we will periodically feature a recipe from camp. Here's a hearty breakfast.*

**Frontier Egg Bake** Serving Size: 1/8 of 9x13 pan

1 pound bulk pork sausage	1 ½ C eggs
2 cups milk	1 teaspoon salt
1 teaspoon ground mustard	6 slices white bread, cut into 1/2-inch cubes
1 cup shredded Cheddar cheese	½ to 1 C shredded hashbrowned potatoes, thawed

Directions: Brown pork sausage and drain well. In a large bowl, beat eggs; add milk, salt and mustard. Stir in bread cubes, cheese, sausage and hashbrowns. Pour into a greased 9x13" baking dish. Cover and refrigerate for 8 hours or overnight. Bake, uncovered, at 350 degrees F for about 60 minutes or until a knife inserted near the center comes out clean.



# Leaders Association

# Meeting Minutes

**August 14, 2007 7:30 pm**

The August meeting was called to order by President Craig Bowman at 7:42 P.M. The pledges were said. Leaders present were: Craig, Fran, Becky, Marge, Missy, Deb and Kristi. Kelley represented the Jr. Leaders and Mary was there from Extension. Mary's sister Linda also joined us at the meeting.

Kristi was appointed secretary in Jodi's absence.

Motion by Marge and seconded by Fran to accept the secretary's report as printed. Motion carried.

Motion by Marge and seconded by Becky to accept the July and August treasurer's report. Motion carried.

Fran made a motion to "obtain a check card for the Burnett County Leader's Association for the treasurer to use for on-line banking. The card will stay in the treasurer's possession and the pin number will change with the election of a new treasurer." Becky seconded the motion. Motion carried.

Bills to be paid included the camp life guard, \$50.00, Becky, \$198.25 for food and other camp supplies and Deb, \$240.12 for addition camp supplies. Fran made a motion and Becky seconded to pay the bills presented. Motion carried.

## EXTENSION REPORT

Jade is attending National 4-H Congress. There is a banner at the office to be used at fairs, parades, etc. The theme is Capture the 4-H Spirit. There is a Volunteer Forum in Milwaukee October 12-14. We are changing computer software from Blue Ribbon to 4-Hplus and 4-H4Me. There is going to be a Herdsmanship Award given out at the Grantsburg Fair in the horse barn. There is a first aid kit that clubs can check out for outings from the office. We found out the hard way that the county van does not have collision insurance. Thank-yous were received from Jacob S., Michael W., and Jaden C. We received a letter inviting us to park cars at the art show at Voyager Village.

## JR. LEADER REPORT

Kelley reported that they are working on a booth, a window display and will be selling chips during the fair parade.

Mary reported about all the handbooks and evaluations that were used for camp. Parents have been returning their evaluations and we will find out the results at next meeting. We watched a short presentation about camp. The kids looked like they had a great time. There is a total of 33 youth involved in camp. There is a resource book available to clubs with skits, songs and games. It became very popular during camp with the counselors.

Kelley reported on the activity center at the State Fair. 4 youth and 1 adult represented Burnett County. We were represented at the Clothing review by 2 youth and 1 adult. Deb asked the Leader's Association to consider helping with the cost of the trip. No action was taken. Jodi, through a letter, stated that the clothing review was "wonderful activity" and that she would like to see the county contest moved up to March and the Leaders Association help sponsor the trip. There was a motion to help pay the cost of the clothing review but we decided to table it until the next meeting with more leader input.

Clubs have been busy. The Beavers worked at Music in the Park, Coomer Badgers are working on a WORLD

# Orange 4-H Club Notes



Submitted By: Sam Kopecky  
Attendance: 9 kids and 5 adults  
Business 9/8/07

- The Kopeckys and Summers are in charge of doing the window display. We are taking the quilt idea from the same one we did at the Cultural Arts Festival.
- We will have Club meetings on the 3rd Sunday of every month. They will start at 2:00 p.m. The next meeting for our club is club achievement night at the Orange School house on October 21 at 2:00 p.m. The next meeting after that we have scheduled for November 18 at 2:00 p.m.
- County Achievement night is October 20th at the Siren High School at 7:00 p.m.
- There are Leader's meetings on the 2nd Tuesday of every month.
- There are Jr. Leader meetings on the 1st Monday of every month.
- The Leaders Banquet is November 13th.
- They will be sending letters for our meetings to the 4-Her's in school.
- Welcome Beth Grieff and family, Amy, Sue and David.

## *Leaders Association Meeting Minutes, continued*

PEACE poster, Wood Creek worked at the Rock Show, Orange had a picnic and many entered at the Webster Fair and the Jolly H's went to the Waterslide at Wild Mountain.

### OLD BUSINESS

No final report on food stand.

Garden Tour August 16. Only 2 families have signed up. Grantsburg Fair is August 23-26. Talent Show August 25. Still time to sign up for show.

### NEW BUSINESS

Record books are due to county office September 11th. We will set the date for the Blue Ribbon Record Book Committee meeting at the September meeting. Becky will meet with Mary to discuss Achievement Night.

National 4-H week is October 7th -13th. Clubs are encouraged to put up window displays. The theme is "Capture the 4-H Spirit."

Achievement Night is set for October 20th.

The Music Contest is set for November 9th.

Coomer Badgers will be hosts for the September meeting.

Kelley wants to know if you have to go to Madison in order to be eligible for the big trips. After discussion, nothing was decided. Some feel our 4-H guidelines need to be reviewed and updated.

Marge made a motion to adjourn the meeting, Kristi seconded. Motion carried. The meeting ended at 9:37 P.M. Lunch was served by the Jolly H's.

Respectfully submitted by Kristi Melin, Acting Secretary

# *Burnett County 4-H Bugle*

## **Burnett County Government Center, Siren**

Phone: 715/349-2151

Fax: 715/349-2102

Email: [mary.pardee@ces.uwex.edu](mailto:mary.pardee@ces.uwex.edu)

Website: <http://www.uwex.edu/ces/cty/burnett>

Mary Pardee, Youth Development Educator

Marilyn Kooiker, Family Living Agent

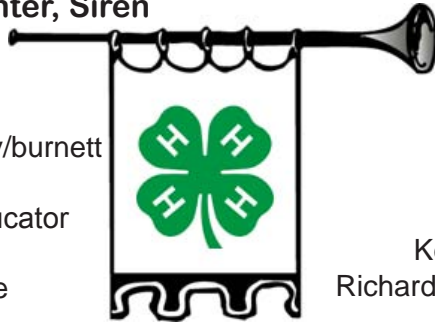
Mike Kornmann, Community Resource  
Development Agent

Julie Yezek, Nutrition Education Program

Marleen Seul, Support Staff

Nancy Peterson, Support Staff

Asa Olson, Student Intern



## **Northern District Office**

Phone: 715/635-9190

John Preissing, District Director

Cathy Crandall, Support Staff

Spooner Research Station

Phone: 800/528-1914

Kevin Schoessow, Area Ag Agent

Richard (Otto) Wiegand, Area Ag Agent

*An EEO/AA employer, University of Wisconsin-Extension provides equal opportunities in employment and programming, including Title IX and ADA requirements. Persons with disabilities who require alternative means for communication of program information should contact the UW-Extension office.*

## **Burnett County 4-H Leaders Association Executive Committee**

Craig Bowman, President; Linda Isaacson, Vice President;

Jodi Schinzing, Secretary; Melissa Peterson, Treasurer



Cooperative Extension Programs

US Department of Agriculture

University of Wisconsin Extension

Burnett County Extension Office

7410 County Road K #107

Siren, WI 54872

Official Business

Penalty for Private Use, \$300